



KID'S PADDLE-PUSHER

Here is a sturdy and easily-built scow for active young sea captains

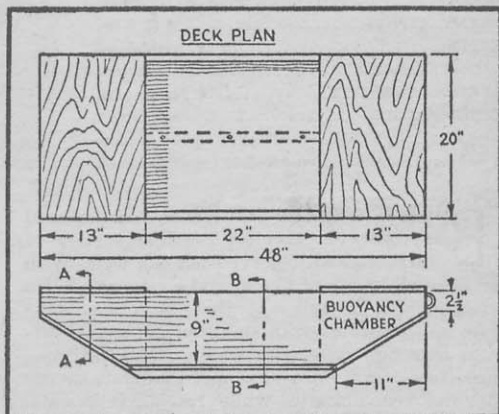
By HI SIBLEY



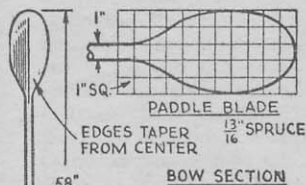
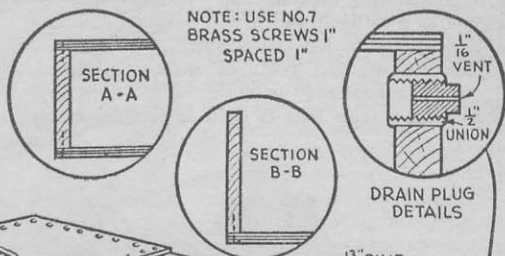
THE boy, who never had a boat, never had a boyhood, but there is no reason for him to be denied when you can build his first sea command as easily and inexpensively as this little scow. It makes no claims for beauty but is absolutely safe and, with the buoyancy chambers in each end, will float with cockpit full of water and a full crew aboard. And it is sturdily put together to take the beating which it most certainly will receive when active youngsters are turned loose with it.

If you are careful in fitting joints, no calking other than marine glue will be necessary. Make sides first and join them with the end members and cross-cleats at the break of the bottom. Apply marine glue liberally on all contacting surfaces, then screw on the bottom and sloping ends. Screws should be slightly counter-sunk. Install the inboard partitions of buoyancy chambers next, and then the decks. Each watertight compartment should have a drain plug, with a vent to equalize air pressure under varying temperatures.

The painter is secured to a large staple, clinched on the inside, and the craft can be moored in shallow water on a long line, permitting the skipper to paddle about without getting into dangerous waters. Although marine plywood is guaranteed water-resistant, it is a good idea to work paint well into the edges. Canary yellow is a recommended color for the outside, as it can be seen a long way on water if the boat drifts away. Paint the cockpit gray and varnish the deck in natural grain.



NOTE: USE NO.7 BRASS SCREWS 1" SPACED 1"



BOW SECTION

